



PRECAST / PRESTRESSED CONCRETE
MANUFACTURERS
ASSOCIATION OF CALIFORNIA

100 NORTH BRAND BOULEVARD
SUITE 200
GLENDALE, CALIFORNIA 91203
(818) 247-6177
FAX (818) 240-3041
doug@precastconcrete.org
www.precastconcrete.org

YOUR QUALITY CALIFORNIA
PRODUCERS MEMBERS:

CLARK PACIFIC
WEST SACRAMENTO & FONTANA,
CALIFORNIA
(916) 371-0305 / (909) 823-1433
www.clarkpacific.com

CON-FAB CALIFORNIA CORPORATION
LATHROP,
CALIFORNIA
(209) 249-4700
www.confabca.com

CORESLAB STRUCTURES (L.A.) INC.
PERRIS,
CALIFORNIA
(951) 943-9119
www.coreslab.com

FINTECH PRECAST, INC.
REDDING,
CALIFORNIA
(530) 241-8397
www.fintechprecast.com

HANSON STRUCTURAL PRECAST
IRVINDALE, PLEASANT HILL,
& SAN DIEGO,
CALIFORNIA
(626) 962-8751
www.hansonstructural.com

KIE-CON, A DIVISION OF
KIEWIT PACIFIC CO.
ANTIOCH,
CALIFORNIA
(925) 754-9494
www.kiecon.com

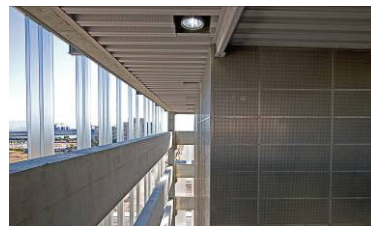
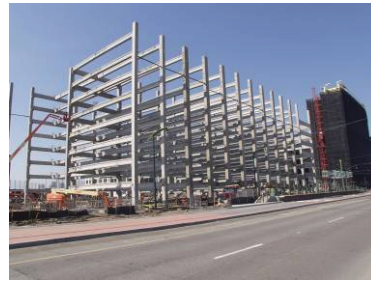
MID-STATE PRECAST, L.P.
CORCORAN,
CALIFORNIA
(559) 992-8180
www.midstateprecast.com

POMEROY CORPORATION
PERRIS,
CALIFORNIA
(951) 657-6093
www.pomeroycorp.com

EXECUTIVE DIRECTOR
DOUGLAS M. MOORADIAN, A.I.A.



PRECAST – A California Winner



UCSF Mission Bay Parking

San Francisco, California

This 9-level structure provides public, employee, and student parking for UCSF's new Mission Bay campus.

Clark Pacific's post & beam solution provided schedule savings and offered long-span interior areas that could not have been provided with conventional cast-in-place forming methods.

PROJECT INFORMATION

Owner

University of California

Architect

VBN Architects

Structural Engineer

Jessen-Wright Structural
Engineers

General Contractor

Overaa Construction

Precaster

Clark Pacific

Gross Area

240,000 SF, 873 stalls

Completion

2006

PROJECT HIGHLIGHTS

- 15 days to erect post & beam structure
- No interior shear walls for improved security

PRECAST PRODUCTS

- Single-lift moment frame columns (up to 95' tall)
- Precast Beams
- Single-lift Gravity Columns